

## Assise FLIP IT B170



### Description

Assise en ciment hydrofugé ( ciment certifié eco operando). Le ciment certifié eco operando émet 35% d'émissions de CO2 en moins que le ciment ordinaire. Agrégats marbre ou carrière concassée.

### Dimensions

Longueur : 170 cm  
Largueur : 163 cm  
Hauteur : 45 cm

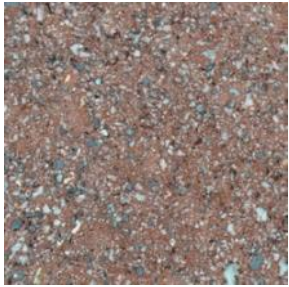
### Poids

1930 kg

### Les options

Autres coloris (nous consulter, augmentation en fonction de la couleur. *Demander un devis.* )

## Couleurs de finition



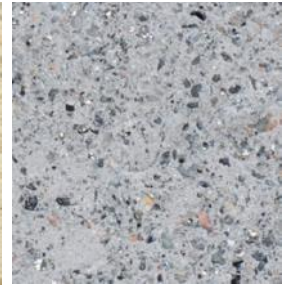
Marron



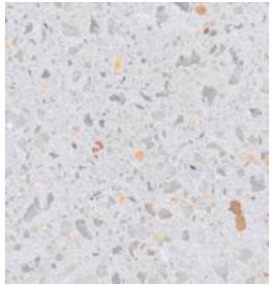
Noir



Ocre



Gris



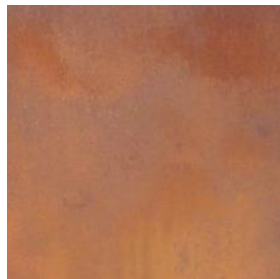
Blanc

## Finition de surface

Revêtements composés de liants qui intègrent des charges de métal concassé et donnent aux éléments urbains l'apparence réelle du métal ainsi que son oxydation et ne se détériorent pas avec le temps.



Bronze



Corten



Golden



Noir graphite

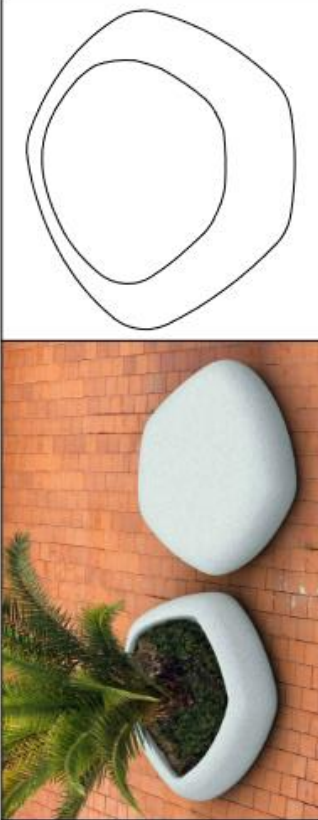


CARACTERÍSTICAS / FEATURES

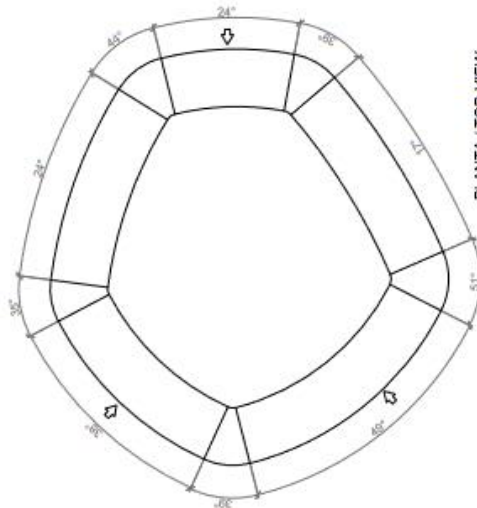
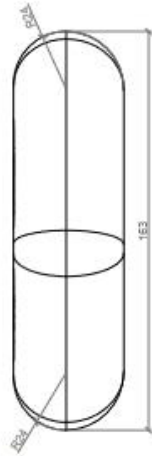
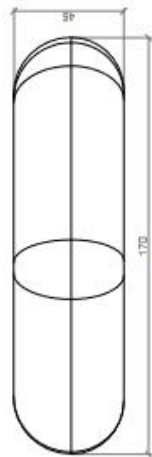
**Material** hormigón Petra 1  
**Acabado** decapado e hidrolugado  
**Dimensiones** l. 170, a. 163, h. 45 cm  
**Color** ver carta de colores  
**Fijación** apoyado por su propio peso  
**Peso** 1930 Kg  
**Palet** 180 x 180 cm

**Material** precast concrete Petra 1  
**Finish** scaled and water-proofed  
**Dimensions** l. 170, w. 163, h. 45 cm  
**Colour** see colour catalogue  
**Fixing** resting on the ground  
**Weight** 1930 Kg  
**Pallet** 180 x 180 cm

diseñador / design: La Noche de la Iguana - Kiko Solsona



GEOMETRIA / GEOMETRY

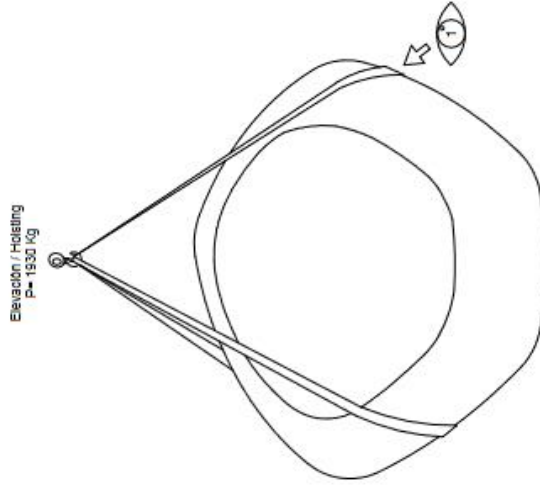


Ubicación del casquillo roscado  
Location of steel socket threaded

ESC. 1:20

MANIPULACIÓN E INSTALACIÓN / HANDLING AND INSTALLATION

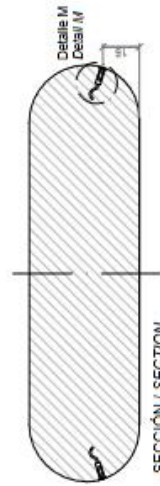
Elevación / Hoisting  
P= 1930 Kg



DETALLE 1 / DETAIL 1



ESPECIFICACIONES / SPECIFICATIONS



Casquillo M16 - Tubo acero zincado alta precisión  
Galvanized steel threaded sleeve High precision

Tomillo avellanado M16 - Inox  
Countersunk screw M16 - Inox