

Banquette DRAKKAR

Banquette avec assise bois 2 lames - support en béton hydrofugé de couleur blanche ou grise en version de base (autres coloris nous consulter).

Longueur 1800 mm - largeur 500mm - hauteur d'assise 490mm - poids 260 kg



Coloris standards grain fin



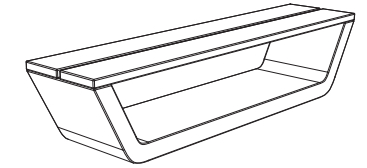
Autres coloris possibles en option (plus value)

CARACTERÍSTICAS / FEATURES

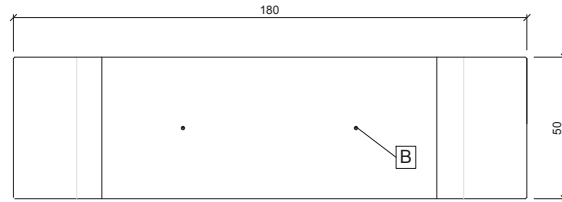
Material hormigón petra 1
Acabado decapado e hidrofugado
Dimensiones l. 180, a. 50, h. 49 cm.
Color ver carta de colores
Fijación anclado mediante varilla roscada y resina epoxy
Peso 260 Kg
Bulto 200 x 200 x 64 cm [4 unidades]
Peso bulto 1055 Kg

Material precast concrete petra 1
Finish scaled and waterproofed
Dimensions l. 180, w. 50, h. 49 cm
Colour see colour catalogue
Fixing anchored with metal rod and epoxy resin
Weight 260 Kg
Package 200 x 200 x 64 cm [4 units]
Weight package 1055 Kg

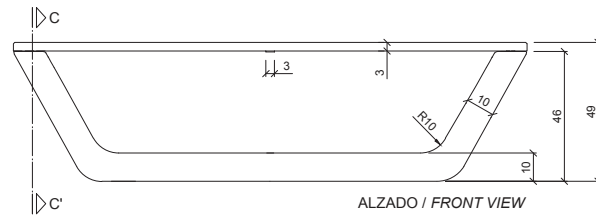
diseñador / design: Den Studio



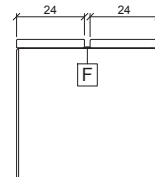
GEOMETRIA / GEOMETRY



VISTA INFERIOR / BOTTOM VIEW



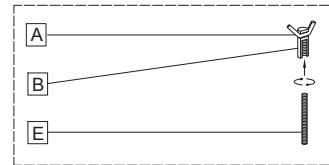
ALZADO / FRONT VIEW



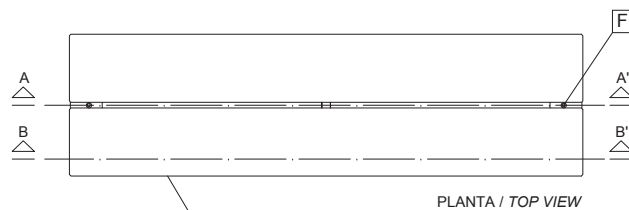
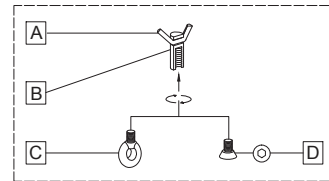
PERFIL / RIGHT SIDE

- barra corrugada / corrugated rod [A]
- casquillo roscado / thread sleeve [B]
- cáncamo / eyebolt [C]
- tapa / stopper [D]
- varilla roscada / thread the rod [E]
- Tornillo Allen / Screw Allen [F]

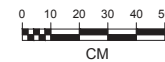
SISTEMA DE FIJACIÓN / ANCHORAGE SYSTEM



SISTEMA DE ELEVACIÓN / LIFTING SYSTEM

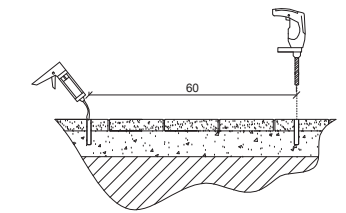
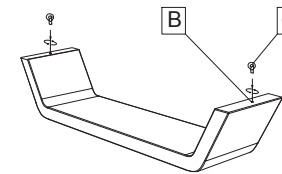


PLANTA / TOP VIEW



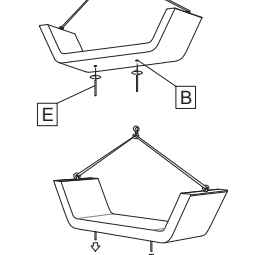
MANIPULACIÓN E INSTALACIÓN / HANDLING AND INSTALLATION

- 1 enroskar cáncamo / thread the eyebolt
- 2 perforar agujero y verter resina epoxy drill hole and pour resin epoxy



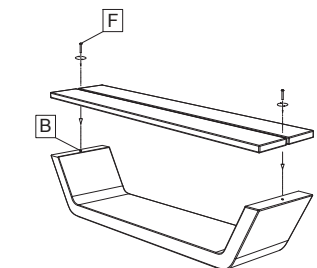
- 3 elevar, enroskar la varilla e instalar lift, thread the rod and install

elevación / hoisting
P= 250 Kg

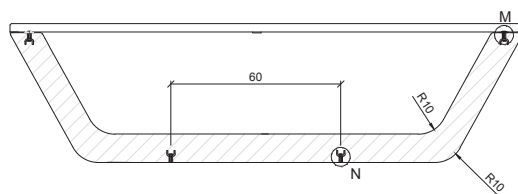


- 4 montar asiento fijando mediante tornillos mount seat fixing with screws

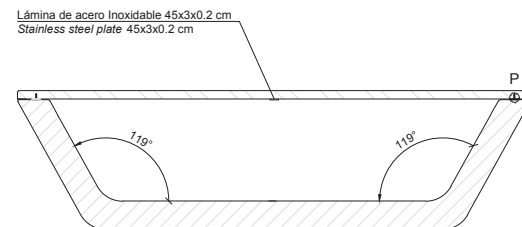
elevación / hoisting
P= 10 Kg



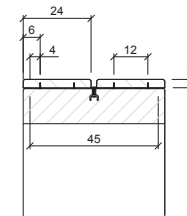
ESPECIFICACIONES / SPECIFICATIONS



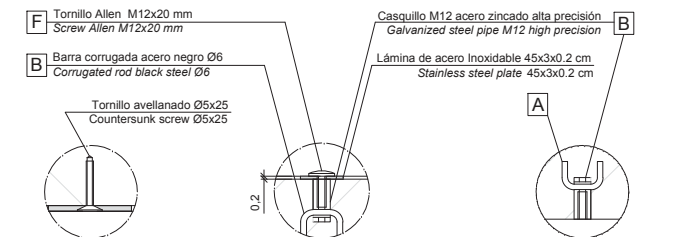
SECCIÓN A-A' / SECTION A-A'



SECCIÓN B-B' / SECTION B-B'



SECCIÓN C-C' / SECTION C-C'



DETALLE P / DETAIL P

DETALLE M / DETAIL M

DETALLE N / DETAIL N