

Jardinière RUSSE J71

Béton



Description : Jardinière en béton hydrofugé.

Dimensions

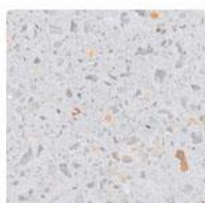
Hauteur : 480

Diamètre : 710mm

Poids : 170 kg.

Coloris standards : Blanc, gris, marron, ocre, noir. Autres couleurs sur demande avec plus-value.

Couleurs de finition



Blanc



Gris



Marron



Ocre



Noir

Optionnel

Fini hors moule

Autres coloris (Consulter)

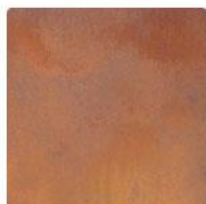
Consulter

Augmentation en pourcentage en fonction de la couleur. *Demander un devis.*

Finitions de surface



Bronze



Corten



Golden



Noir graphite

Revêtements composés de liants qui intègrent des charges de métal concassé et donnent aux éléments urbains l'apparence réelle du métal ainsi que son oxydation et ne se détériorent pas avec le temps.

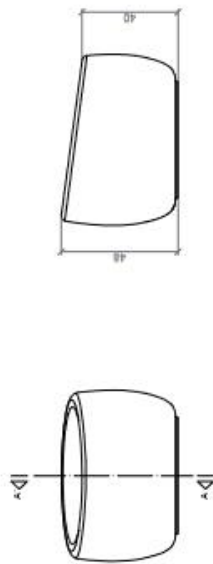
CARACTERÍSTICAS / FEATURES

Material hormigón Petra 1
Acabado decapado e hidrofugado
Dimensiones Ø 71, h. 48 cm
Color ver carta de colores
Fijación apoyado por su propio peso o con resina epoxy
Peso 170 Kg / 88 L
Pallet 100 x 100 cm

Material precast concrete Petra 1
Finish scaled and waterproofed
Dimensions Ø 71, h. 48 cm
Colour see colour catalogue
Fixing resting on the ground or with epoxy resin
Weight 170 Kg / 88 L
Pallet 100 x 100 cm

diseñador / design: kularq studio + YHY design

GEOMETRIA / GEOMETRY



ALZADO / FRONT VIEW

PERFIL / RIGHT SIDE



PLANTA / TOP VIEW

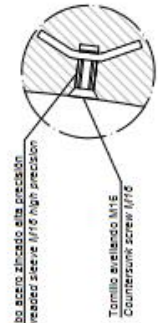
Ubicación del casquillo roscado
Location of steel socket threaded

ESCALA / SCALE : 1/ 20

ESPECIFICACIONES / SPECIFICATIONS



SECCIÓN A-A' / SECTION A-A'

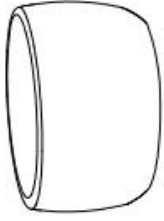
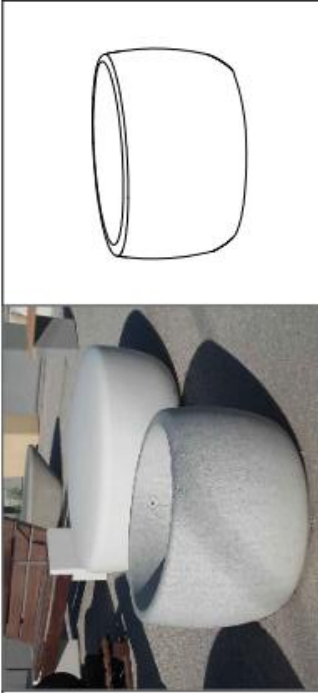
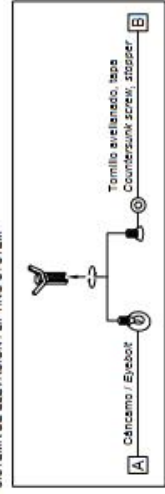


DETALLE N / DETAIL N

Casquillo M16 - Tubo acero alabrado alta precisión
Galvanized steel threaded socket
high precision

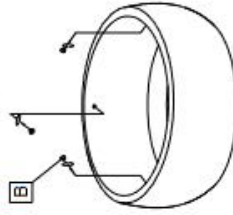
Tomillo avellanado M16
Countersunk screw M16

SISTEMA DE ELEVACIÓN / LIFTING SYSTEM

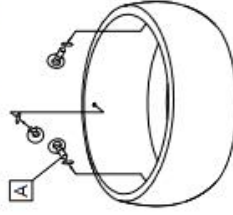


MANIPULACIÓN E INSTALACIÓN / HANDLING AND INSTALLATION

1 Extraer tapa / Extract stopper



2 Enroscar cáncamo / Thread the eyebolt



3 Verter resina epoxy / Pour resin epoxy



4 Elevar e instalar / Lift and install

Elevación / Hoisting
F= 170 Kg

