

## Banquette ARECA



### Description

Assise en ciment hydrofugé ( ciment certifié eco operando) et bois. Le ciment certifié eco operando émet 35% d'émissions de CO2 en moins que le ciment ordinaire. Agrégats marbre ou carrière concassée.

### Dimensions

Longueur : 180 cm  
Hauteur assise : 47 cm  
Largeur 49 cm

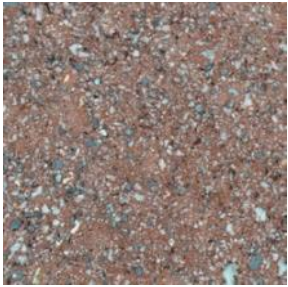
### Poids

116 kg

### Les options

Autres coloris (nous consulter, augmentation en fonction de la couleur. *Demander un devis.* )

## Couleurs de finition



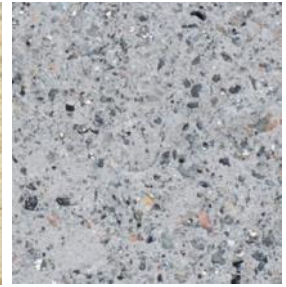
Marron



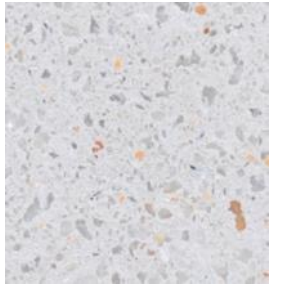
Noir



Ocre



Gris



Blanc

## Finition de surface

Revêtements composés de liants qui intègrent des charges de métal concassé et donnent aux éléments urbains l'apparence réelle du métal ainsi que son oxydation et ne se détériorent pas avec le temps.



Corten

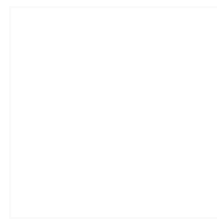


Noir graphite

## Couleurs en option options



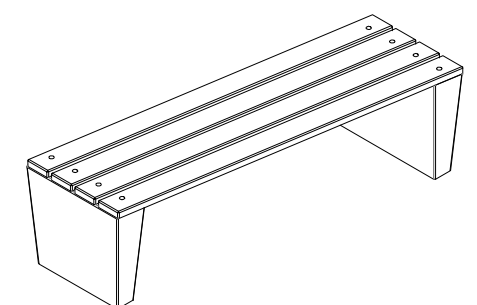
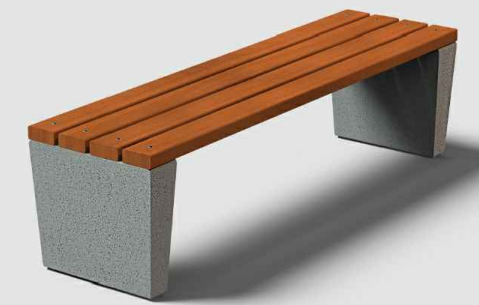
CARACTERÍSTICAS / FEATURES



**Material** hormigón Petra 1 + madera  
**Acabado** decapado e hidrofugado  
**Dimensiones** l. 180, a. 49, h. 47 cm  
**Color** ver carta de colores  
**Fijación** apoyado por su propio peso o mediante varillas metálicas  
**Peso** 116 Kg  
**Palet** 200 x 80 cm (5 un)

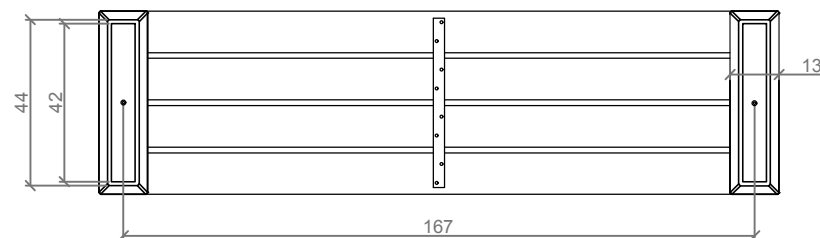
**Material** precast concrete Petra 1 + wood  
**Finish** sanded and waterproofed  
**Dimensions** l. 180, w. 49, h. 47 cm  
**Colour** see colour catalogue  
**Fixing** resting on the ground or with metal rod  
**Weight** 116 Kg  
**Pallet** 200 x 80 cm (5 un)

diseñador / design: magourban

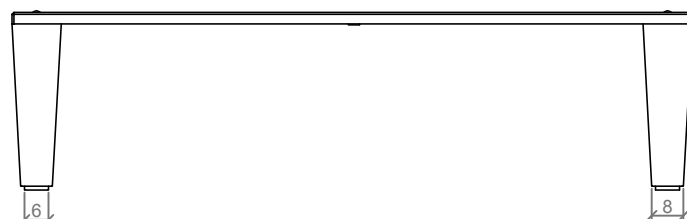


ARECA

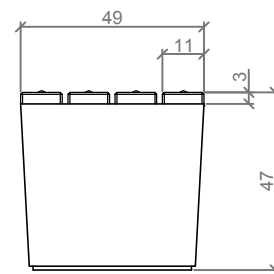
GEOMETRIA / GEOMETRY



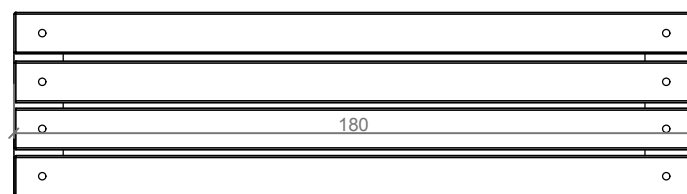
VISTA INFERIOR / BOTTOM VIEW



ALZADO / FRONT VIEW

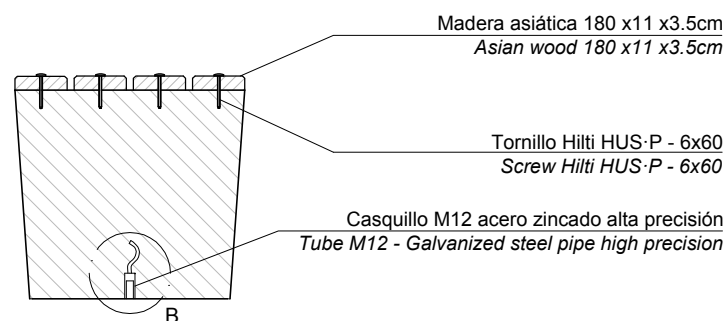


PERFIL / PROFILE

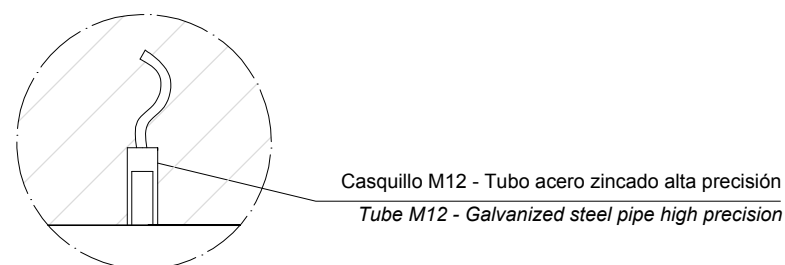


PLANTA / TOP VIEW

ESPECIFICACIONES / SPECIFICATIONS



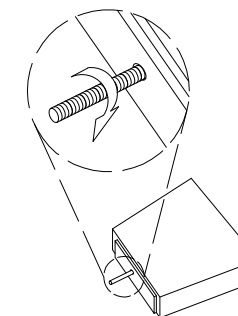
SECCIÓN / SECTION



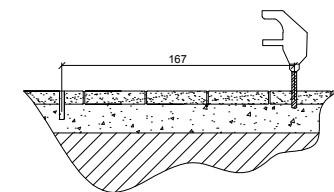
DETALLE B / DETAIL B

MANIPULACIÓN E INSTALACIÓN / HANDLING AND INSTALLATION

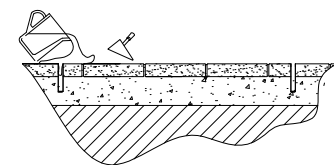
1 Enroscar la varilla  
Thread the rod



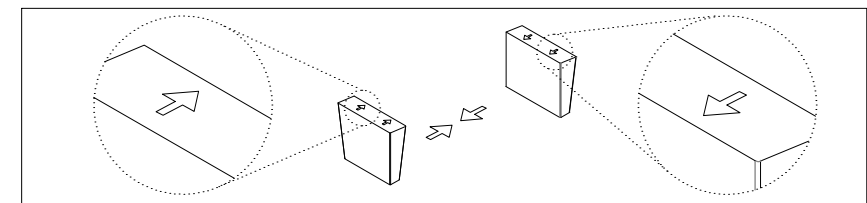
2 Perforar 2 agujeros a una distancia de 167 cm  
Drill 2 holes each other at a distance of 167 cm



3 Verter resina epoxy / pour resin epoxy

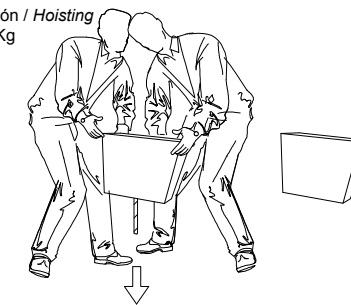


ATENCIÓN!!! DEBE INSTALAR LOS SOPORTES CON LA FLECHA ORIENTADA HACIA EL INTERIOR  
ATTENTION !!! SHOULD INSTALL SUPPORTS WITH ARROW ORIENTED TO INSIDE



4 Insertar la varilla en el agujero  
Insert metal rod in hole

Elevación / Hoisting  
P= 50 Kg



5 Instalar madera y fijar tornillos  
Install wood & tightening screw.

