

Banc PUBLIC



Description

Assise en ciment hydrofugé (ciment certifié eco operando). Le ciment certifié eco operando émet 35% d'émissions de CO2 en moins que le ciment ordinaire. Agrégats siliceux.

Dimensions

Longueur : 211 cm

Hauteur assise : 45 cm

Hauteur dossier : 85 cm

Largeur 57 cm

Poids

360 kg

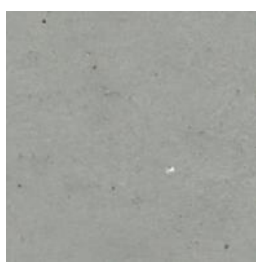
Les options

Autres coloris (nous consulter, augmentation en fonction de la couleur. *Demander un devis.*)

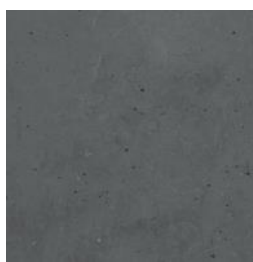
Couleurs de finition



Blanc



Gris



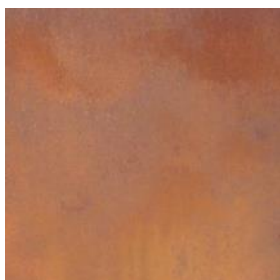
Noir

Finition de surface

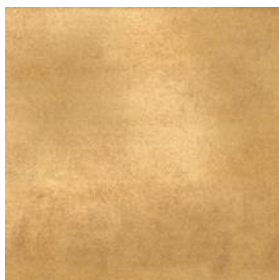
Revêtements composés de liants qui intègrent des charges de métal concassé et donnent aux éléments urbains l'apparence réelle du métal ainsi que son oxydation et ne se détériorent pas avec le temps.



Bronze



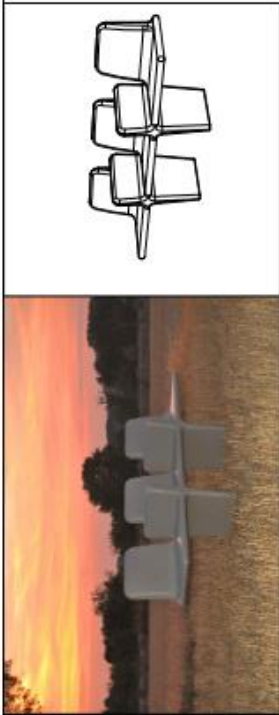
Corten



Golden

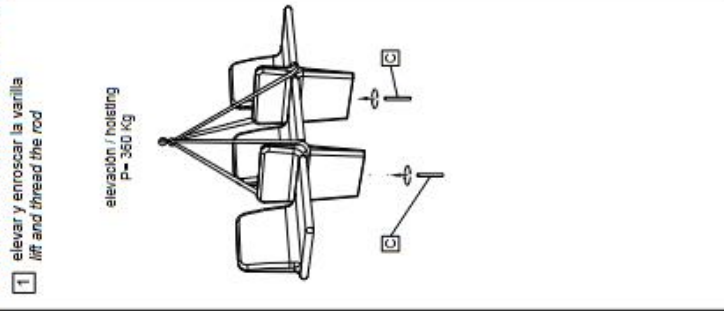


Noir graphite



MANIPULACIÓN E INSTALACIÓN / HANDLING AND INSTALLATION

- 1 elevar y enroscar la varilla / lift and thread the rod
- 2 perforar dos agujeros / drill 2 holes
- 3 verter resina epoxy / pour resin epoxy
- 4 insertar la varilla en el agujero / insert metal rod in hole



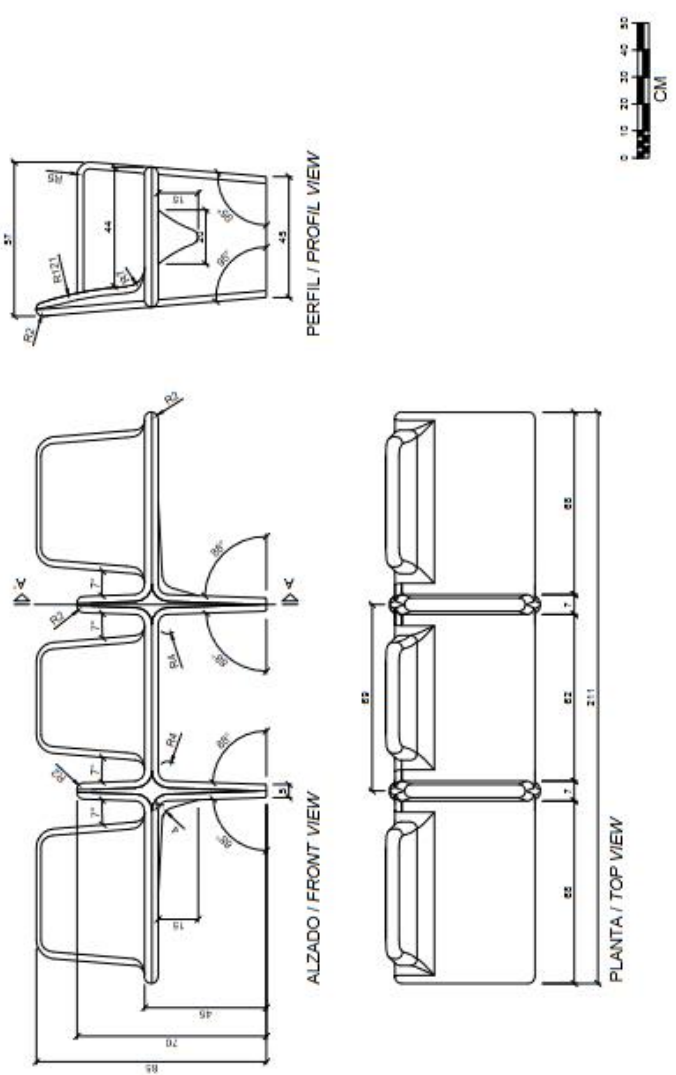
CARACTERÍSTICAS / FEATURES

Material SMC
Acabado liso
Dimensiones l. 211, a. 57, h. 85 cm.
Color ver carta de colores
Fijación mediante varillas metálicas
Peso 360 Kg
Pallet 240 x 115 x 100 cm
Peso pallet 360 Kg

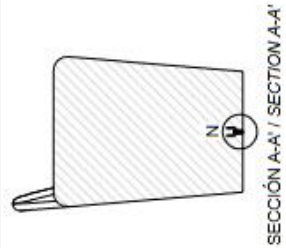
Material SMC
Finish smooth
Dimensions l. 211, w. 57, h. 85 cm
Colour see colour catalogue
Fixing anchored with metal rod
Weight 360 Kg
Pallet 240 x 115 x 100 cm
Weight pallet 740 Kg

designer / design: diez+diez diseño

GEOMETRIA / GEOMETRY

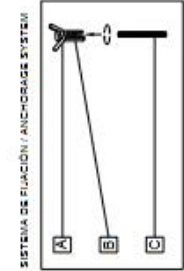


ESPECIFICACIONES / SPECIFICATIONS



- A Barra corrugada acero negro Ø6 - REA6
Corrugated rod black steel Ø6 - REA6
- B Casquillo M12 - Tubo acero zincado alta precisión
Galvanized steel / threaded sleeve M12 high precision

DETALLE N / DETAIL N



- A barra corrugada / corrugated rod
- B casquillo roscado / threaded sleeve
- C varilla roscada / thread the rod
- D espuma embalaje / packing foam

SECCIÓN A-A' / SECTION A-A'