

Banc PRACTIC



Description

Assise en ciment hydrofugé (ciment certifié eco operando). Le ciment certifié eco operando émet 35% d'émissions de CO₂ en moins que le ciment ordinaire. Agrégats en marbre ou carrière concassée.

Dimensions

Longueur : 280 cm

Largueur : 60 cm

Hauteur dossier : 80 cm

Poids

1650 kg

Les options

Autres coloris et finitions (nous consulter, augmentation en fonction de la couleur. *Demander un devis.*)

Couleurs de finition



Marron



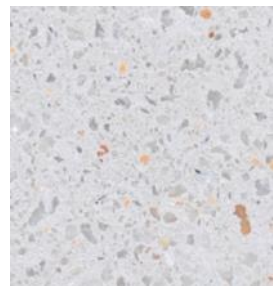
Noir



Ocre



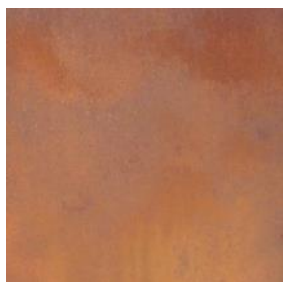
Gris



Blanc

Finition de surface

Revêtements composés de liants qui intègrent des charges de métal concassé et donnent aux éléments urbains l'apparence réelle du métal ainsi que son oxydation et ne se détériorent pas avec le temps.



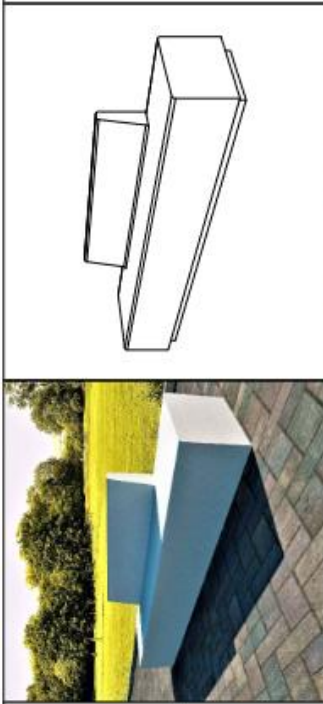
Corten



Noir graphite

Couleurs en options





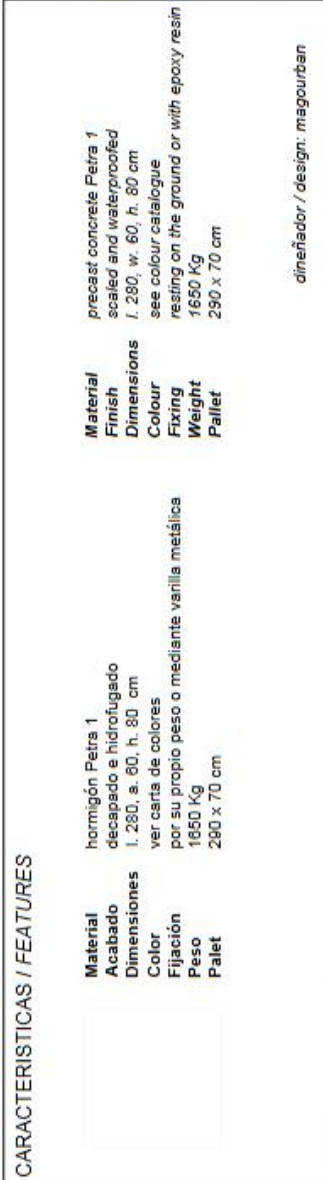
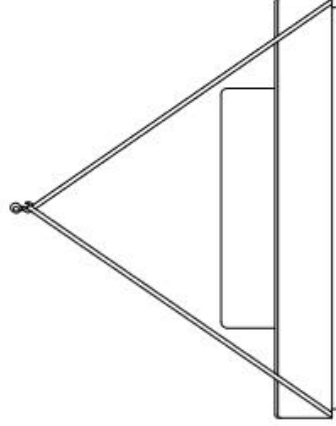
Material hormigón Petra 1
Acabado decapado e hidrofugado
Dimensiones l. 280, a. 80, h. 80 cm
Color ver carta de colores
Fijación por su propio peso o mediante varilla metálica
Peso 1650 Kg
Palet 280 x 70 cm

Material precast concrete Petra 1
Finish scaled and waterproofed
Dimensions l. 280, w. 80, h. 80 cm
Colour see colour catalogue
Fixing resting on the ground or with epoxy resin
Weight 1650 Kg
Pallet 280 x 70 cm

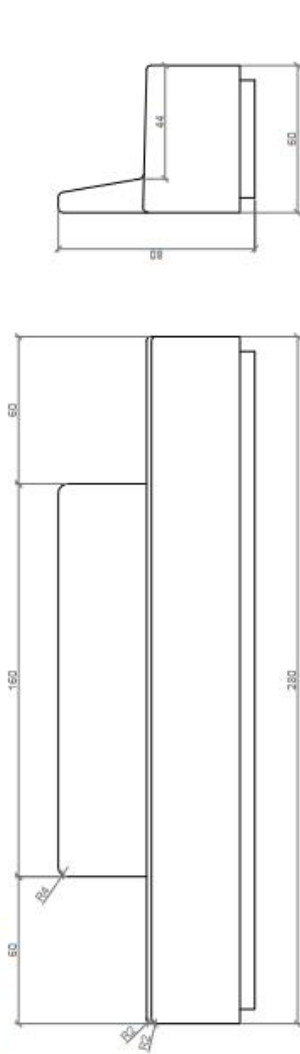
diseñador / design: magourban

MANIPULACIÓN E INSTALACIÓN / HANDLING AND INSTALLATION

Elevación / Hoisting
P= 1650 kg

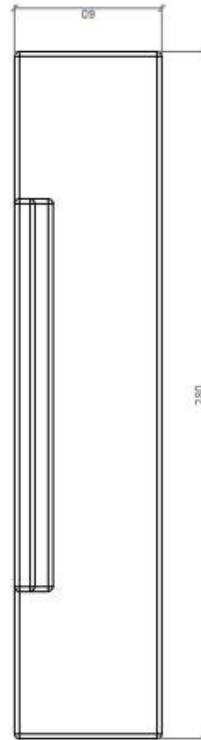


GEOMETRIA / GEOMETRY



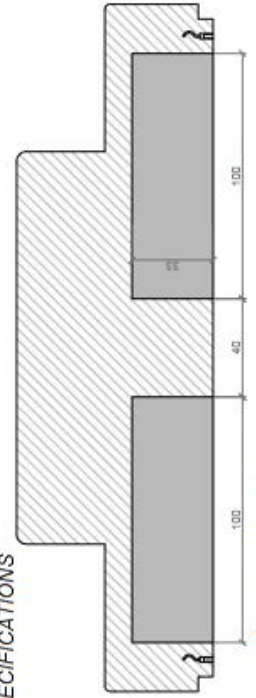
ALZADO / FRONT VIEW

PERFIL / PROFILE VIEW

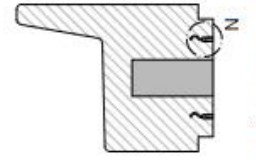


PLANTA / TOP VIEW

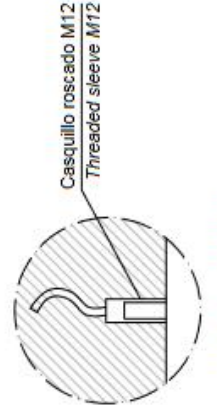
ESPECIFICACIONES / SPECIFICATIONS



SECCIÓN A-A' / SECTION A-A'



SECCIÓN B-B' / SECTION B-B'



DETALLE N / DETAIL N